

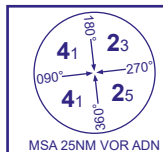
INSTRUMENT APPROACH CHART - ICAO

ABERDEEN/DYCE

LOC/DME

RWY 16

(ACFT CAT A,B,C,D)



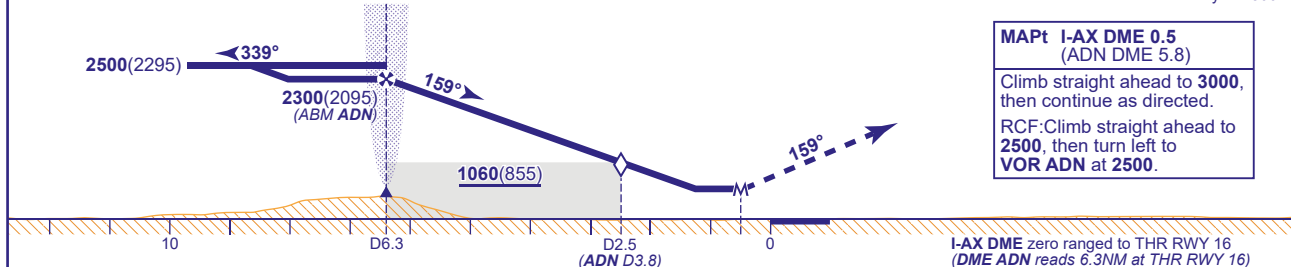
APP 119.055	ABERDEEN APPROACH	AD ELEVATION 215	TRANSITION ALTITUDE 6000
TWR 118.105	ABERDEEN TOWER	THR ELEVATION 205	
121.705	ABERDEEN GROUND	OBSTACLE ELEVATION 1296 AMSL (1091) (ABOVE THR)	
RAD 119.055, 128.305	ABERDEEN RADAR	BEARINGS ARE MAGNETIC	
ATIS 114.300 (VOR ADN)	ABERDEEN INFORMATION		



RECOMMENDED PROFILE Gradient 5.2%, 320FT/NM

DME I-AX (ADN)	6(0.5)	5(1.4)	4(2.4)	3(3.4)	2(4.3)
ALT(HGT)	2170(1965)	1850(1645)	1530(1325)	1210(1005)	900(695)

Arrival via IAF **not below MSA** or **2500** whichever is higher (See Note 1).
Shuttle in hold if necessary to **2500**.

MAPt I-AX DME 0.5
(ADN DME 5.8)

Climb straight ahead to **3000**, then continue as directed.
RCF: Climb straight ahead to **2500**, then turn left to **VOR ADN** at **2500**.

Aircraft Category		A	B	C	D	Rate of descent	G/S KT	160	140	120	100	80
OCA (OCH)	Procedure	690(485)	690(485)	690(485)	690(485)		FT/MIN	850	740	640	530	420
VM(C)OCA (OCH AAL)	Total Area	1150(935)	1320(1105)	1420(1205)	1420(1205)							
	East of RWY 16/34	720(505)	940(725)	1050(835)	1070(855)							

ALTERNATIVE PROCEDURE BASE TURN REVERSAL

From VOR ADN: fly outbound on R008 (CAT A,B) or R034 (CAT C,D) descending as required to **not below 2500**. At I-AX DME 8.8 (ADN DME 3) base turn left to intercept the LOC. When established continue as for main procedure.

NOTE 1 Subject to ATC approval, aircraft inbound to VOR ADN may descend to **2900** when within 10NM of DME ADN and to **2500** when within 6NM of DME ADN.

2 VOR ADN is 0.35NM east of LOC.

3 I-AX DME and ADN DME not co-located. Ensure correct range cross check is used for the DME received.

CHANGE (9/23): VOR/DME ADN AERIAL ELEVATION.